

DELTA BRANCH

**MUSIC**  
**TEACHERS'**  
**ASSOCIATION**  
**OF CALIFORNIA**

Delta Branch

# NEWS

Happy New Year, 2018

## BRANCH EVENTS - JANUARY

20 Student Recital

## BRANCH EVENTS - FEBRUARY

17 Student Recital(s)

## OTHER EVENTS - JANUARY

13 The Met Documentary

21 Adult Seminar

## OTHER EVENTS - FEBRUARY

11 Diablo Symphony Orchestra

17, 18 Contra Costa Chamber Orchestra

## COMING UP - MARCH

3 CM for strings in Stockton

10, 11 CM for piano and winds at LMC

17 CM Honors Recital(s)

Page In this Issue:

4 A Message from your CM Chair

1 Adult Seminar

2 Barnes & Noble Fundraiser

1 Board Meeting

3 Diablo Symphony and Contra Costa Chamber Orchestra

2 Met Documentary

5 Photo Gallery

1 Spring Dates

### ADULT SEMINAR

SUNDAY, JANUARY 21

2:00 PM

AT THE HOME OF KATHY CROWE

RSVP MAUREEN AT 754-7216

**Board Meeting**  
**Monday, January 8**  
**8:30 - 10:00 AM**  
**Digger's Diner**  
**on Balfour**  
**Brentwood**

**Spring Dates**  
(subject to confirmation by LMC)

**Jan 20 Student Recital**

**Feb 17 Student Recital(s)**

**March 10, 11, 17 CM and Honors Recital**

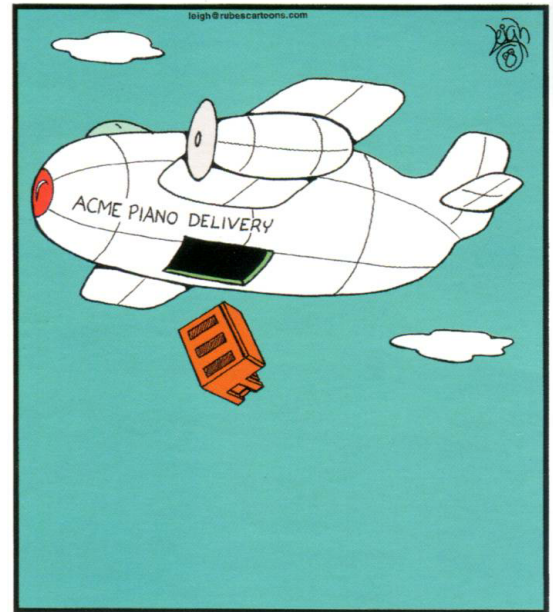
**April RRYAC and Student Recital TBD**

**May Student Recital TBD**

## Barnes & Noble Fundraiser

Thank you to all the studios who participated in our December Barnes & Noble Fundraiser on December 2. We brought in \$1232.43 in purchases and \$152.41 in tips.

Our next date is May 12 - put it on your calendar now!



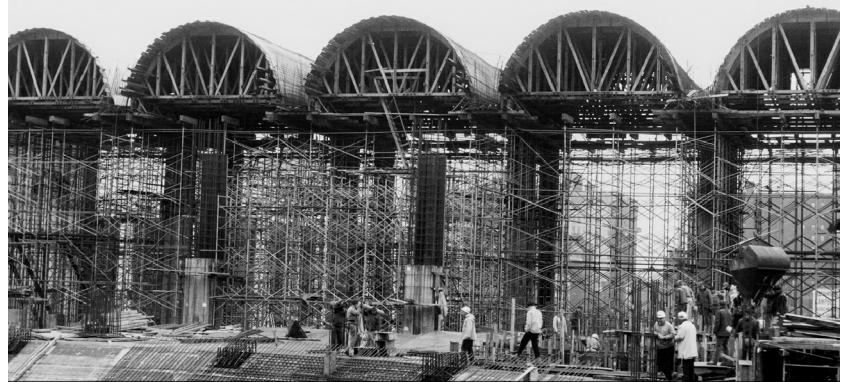
Proudly serving the cartoon industry  
for over 60 years

This documentary was made in celebration of the 50th anniversary of the opening of Lincoln Center, home of the Metropolitan Opera. It is Live on HD, in movie theaters, on Saturday, January 13, 2018, at 12:55 pm. It will be shown at the AMC Theater in Brentwood.

Starring famed soprano Leontyne Price, The Opera House surveys a remarkable period of the Metropolitan Opera's rich history and a time of great change for New York. Featuring rarely seen archival footage, stills, recent interviews, and a soundtrack of extraordinary Met performances, the documentary, by award-winning filmmaker Susan Froemke, chronicles the creation of the Met's storied home of the last 50 years, against the backdrop of the artists, architects, and politicians who shaped the cultural life of New York City in the '50s and '60s. Among the notable figures in the film are Price, who opened the new Met in 1966 in Samuel Barber's *Antony and Cleopatra*; Rudolf Bing, the Met's imperious General Manager, who engineered the move from the old house to the new one; Robert Moses, the unstoppable city planner who bulldozed an entire neighborhood to make room for Lincoln Center; and Wallace Harrison, whose quest for architectural glory was never fully realized.

*"A feast for opera lovers"* —HOLLYWOOD REPORTER

## THE OPERA HOUSE



The Met  
ropolitan  
Opera



TICKETS ON SALE NOW  
In cinemas January 13 & 17

LEARN MORE

# DIABLO SYMPHONY ORCHESTRA

February 11, 3:30 PM

Walnut Creek Presbyterian Church  
1801 Lacassie Ave.

This concert takes us around the globe! Bay Area composer Jean Ahn's work, **Ongheya**, based on a Korean farming song, starts our journey. We explore the caves off the coast of Scotland with Mendelssohn's **Hebrides Overture**, and finish with Beethoven's stunning but underappreciated **Mass In C**. The concert features guests soloists Rebecca Garcia, Betany Coffland, Michael Dailey, and Kirk Eichelberger, as well as the choirs of Chromatica, CSU East Bay and San Ramon Valley High School.

## THE CONTRA COSTA CHAMBER ORCHESTRA

February 17, 2:00 PM El Campanil

February 18, 2:00 PM Leshner Center

### LUDWIG AND LEONARD

with soloists Samantha Rose Cardenas, soprano,  
and Jeffrey Albright, tenor

Overture to Coriolanus, Op. 62

Symphony No. 1 in C, Op. 21

INTERMISSION

Celebrating the 100th Anniversary of Leonard Bernstein's Birth:

Overture to On the Town

Concert Suite No. 1, from West Side Story

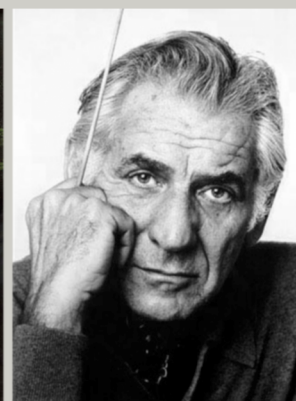
**Maria – One Hand, One Heart – Somewhere – Balcony Scene (Only You/Tonight)**

with Samantha Rose Cardenas, soprano, and Jeffrey Albright, tenor

**"Dream with Me," from Peter Pan**

with Samantha Rose Cardenas, soprano

Overture to Candide





## A message from your CM Chair

THE CM database is open for you to enter repertoire for your students.

**YOU MUST ENTER REPERTOIRE BY THE 15TH OR THE STUDENT WILL BE DROPPED FROM CM THIS YEAR!!**



Ahhhh, now that THAT unpleasantness is over. . . Go to [new.mtac.org](http://new.mtac.org), pull up your student list either under STUENTS or under CERTIFICATE OF MERIT. Click the “INCOMPLETE” button or the student ID, then choose the “CM Application Details” bar to choose Honors or Convention (this also MUST be done by the 15th - I cannot change your recommendations for Honors or Convention after the 15th). You may notice the line “Do you want to perform in an ensemble?” with a YES button showing next to it - you

can ignore this, unless the student really is performing in an ensemble, in which case, press the YES button to enter details.

Next, move to the “Repertoire List” bar, which is probably already open. To enter repertoire, the less you type the better for the system to find the repertoire for you. Begin with just 4 letters of either the piece or the composer, then let the system auto-fill for you. I would recommend using the suggestion that has the highest number in parentheses next to it - this number is a count of how many times that title has been used in the database. The higher the number, the more consistent our entries will be across the state.

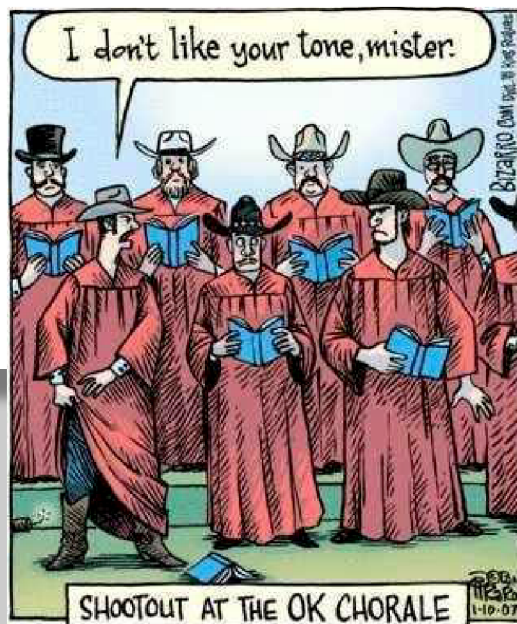
Use the “SCHEDULE PREFERENCES” bar to enter AM/PM or Sat/Sun preference, as well as car pool information.

You’ll notice each gold bar has its own “SAVE. . .” button. So be sure to click SAVE REPERTOIRE LIST under the Repertoire List bar.

Once you have entered repertoire information, the “INCOMPLETE” button will change to “ENROLLED.”

You can, of course, change any information up until midnight on the 15th.

Don’t hesitate to call (925-325-3395), text, or email me with any questions or concerns.





# Barnes & Noble December 2

